

THE PROJECT

Dober Lidsky Mathey provided space assessment services on a two-firm team studying all academic space at Georgia Tech. The Institute seeks to increase space utilization and efficiency, optimize space allocation, enhance planning routines to support Tech's strong interdisciplinary initiatives and to create a living document as a tool for ongoing planning.

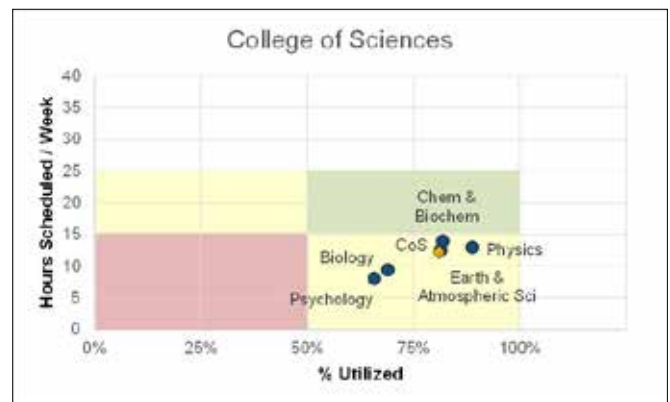
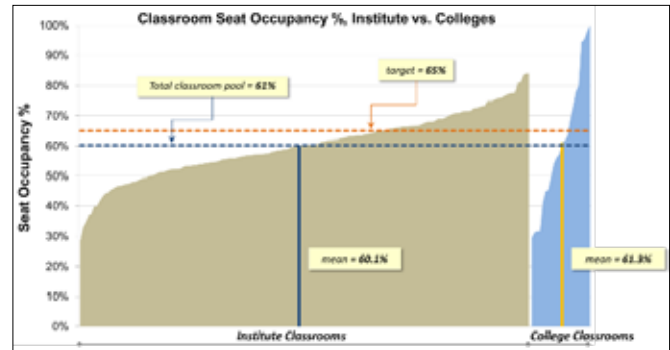
CHALLENGE

Georgia Tech has a talented space management team in place with excellent support from senior leadership. Employing a proven set of tools and routines to record and report on space allocation and sufficiency, the Office of Capital Planning and Space Management (CPSM) initiated the study to discover how they could improve its processes and communication of Institute goals, objectives and initiatives in advancing the best possible support for interdisciplinary collaboration. The consulting team's role was to examine the use of space by all academic units and, through this analysis, to identify areas CPSM can work on to increase the effectiveness of their assistance to these units.

SOLUTION

The team toured all academic space with building users to gain an overview of the major issues in each academic setting. Dober Lidsky Mathey collected the data for a thorough classroom and instructional lab utilization analysis, an in-depth analysis of office space, and an investigation of school conference, study and collaboration spaces. Working closely with our teammates who studied research space employed by each school and Interdisciplinary Research Institute (IRI), a full picture of the current utilization of academic space on campus. Interviewing College, School and IRI representatives as well as a wide range of management offices that track and manage different aspects of Georgia Tech's academic enterprise, the team identified the key issues impeding the optimal deployment and use of space.

Synthesizing our findings from the analysis with insights gained through the interviews, we compiled our observations and recommendations for presentation to a variety of audiences to gain a deeper understanding of how the issues identified affected each group. These sessions led us to refined analyses and improved recommendations on data tracking and integration, policies and protocols, teaching/learning space, research space and office/interaction space.



The following colleges were included in the study:

The Scheller College of Business, the College of Computing, College of Design, College of Engineering, Ivan Allen College of Liberal Arts, and the College of Sciences.

Several improvements to the inventory and space management practices have already been made and a range of longer-term projects were identified with suggested implementation steps. CPSM and Tech's leaders recognize that truly effective space management is itself a collaborative effort involving all those responsible for the advancement of the Institute's academic and research mission.

RESULTS

CPSM has already begun implementing consultant recommendations and organizing longer term efforts with the Colleges, Schools and colleagues.

REFERENCE

Howard Wertheimer
Director, Capital Planning & Space Management
Georgia Institute of Technology
404 385 7604
howard.wertheimer@cpsm.gatech.edu

PRINCIPAL IN-CHARGE

George G. Mathey, AICP
Study Director

Arthur J. Lidsky, AICP, FAAAS
Study Co-Director



DOBER LIDSKY MATHEY
CREATING CAMPUS SOLUTIONS